

# INSTRUCTION MANUAL

•INSTALLATION •SETTING •OPERATING

## **License Manager for VRF System**

**Ver. 1.1**

FUJITSU GENERAL LIMITED

PART NO. 9708870021-02

# LICENSE AGREEMENT

for

## “License Manager for VRF System”

### IMPORTANT-READ CAREFULLY

This LICENSE AGREEMENT for “License Manager for VRF SYSTEM” (“LICENSE AGREEMENT”) is a legal agreement between you and Fujitsu General Limited (“FGL”) for the use of License Manager products designated below, which includes computer software and printed materials, and may include online or electronic documents (“SOFTWARE PRODUCT”). By installing, copying, or otherwise using the SOFTWARE PRODUCT, you accept to be bound by all of the terms and conditions of this LICENSE AGREEMENT. If you do not agree to all of the terms and conditions of this LICENSE AGREEMENT, you may not use the SOFTWARE PRODUCT and shall promptly return the SOFTWARE to the place from which you have obtained it.

### 1. SOFTWARE PRODUCT LICENSE

The SOFTWARE PRODUCT is protected by copyright laws and international copyright treaties, as well as by other intellectual property laws and treaties. The SOFTWARE PRODUCT is licensed to you, not sold. FGL owns the title, copyright, and other intellectual property rights in the SOFTWARE PRODUCT.

### 2. GRANT OF LICENSE

FGL hereby grants you the limited, non-exclusive and non-transferable rights to use the SOFTWARE PRODUCT exclusively to move the license information which is stored in the dongle for the SOFTWARE PRODUCT from such dongle to any other device (including, but not limited to, other dongles and computers) provided you comply with all terms and conditions of this LICENSE AGREEMENT.

### 3. COPYRIGHT

All right, title, and copyright in and to the SOFTWARE PRODUCT, and any copies of the SOFTWARE PRODUCT are owned by FGL. The SOFTWARE PRODUCT is protected by copyright laws and international treaty provisions. Therefore, you may copy the SOFTWARE PRODUCT solely for backup or archival purposes.

### 4. DESCRIPTION OF OTHER RIGHTS AND LIMITATIONS

#### (1) USE OF SOFTWARE PRODUCT

You shall not use the SOFTWARE PRODUCT on a network or otherwise use it on more than 1 computer at the same time. The infrastructure necessary to use this software (PC, accessories, etc.), shall be prepared separately by you.

#### (2) LIMITATIONS ON REVERSE ENGINEERING, DECOMPILATION, AND DISASSEMBLY

You may not reverse engineer, decompile, or disassemble the SOFTWARE PRODUCT, except and only to the extent that applicable law expressly permits such activity notwithstanding this limitation.

#### (3) RENTAL

You may not rent or lease the SOFTWARE PRODUCT.

#### (4) SOFTWARE TRANSFER

You may not transfer the SOFTWARE PRODUCT to any person and/or entity (-ies) either payable or free of charge without the written consent of FGL.

#### (5) TERMINATION

Without prejudice to any other rights, FGL may terminate this LICENSE AGREEMENT if you fail to comply with the terms and conditions of this LICENSE AGREEMENT. In such an event, you shall promptly return all originals and copies of the SOFTWARE PRODUCT to FGL.

## **5. EXPORT RESTRICTIONS**

You acknowledge that the SOFTWARE PRODUCT is of Japan origin. You agree that neither you nor your customers intend to or will, directly or indirectly, export or transmit the SOFTWARE PRODUCT to any country to which such export or transmission is restricted by any applicable regulation or statute, without the prior written consent, if required, of the authorized governmental entity as may have jurisdiction over such export or transmission.

## **6. NO WARRANTY**

TO THE MAXIMUM EXTENT PERMITTED BY APPLICABLE LAW, FGL EXPRESSLY DISCLAIMS ANY WARRANTY FOR THE SOFTWARE PRODUCT. THE SOFTWARE PRODUCT AND ANY RELATED DOCUMENTATION IS PROVIDED "AS IS" WITHOUT WARRANTY OF ANY KIND, EITHER EXPRESSED OR IMPLIED, INCLUDING, WITHOUT LIMITATION, THE IMPLIED WARRANTIES OR MERCHANTABILITY OF FITNESS FOR A PARTICULAR PURPOSE. THE ENTIRE RISK ARISING OUT OF USE OR PERFORMANCE OF THE SOFTWARE PRODUCT REMAINS WITH YOU.

## **7. LIMITATION OF LIABILITY AND CUSTOMER REMEDIES**

FGL'S ENTIRE LIABILITY AND YOUR EXCLUSIVE REMEDY UNDER THIS LICENSE AGREEMENT SHALL BE, AT FGL'S OPTION, REPLACEMENT OF THE SOFTWARE WHICH IS RETURNED TO FGL. THIS LICENSE AGREEMENT SHALL ALSO APPLY TO THE REPLACEMENT SOFTWARE SUPPLIED UNDER THIS SECTION 7.

## **8. NO LIABILITY FOR CONSEQUENTIAL DAMAGES**

TO THE MAXIMUM EXTENT PERMITTED BY APPLICABLE LAW, IN NO EVENT SHALL FGL BE LIABLE FOR ANY DAMAGES WHATSOEVER (INCLUDING, WITHOUT LIMITATION, DAMAGES FOR LOSS OF BUSINESS PROFIT, BUSINESS INTERRUPTION, LOSS OF BUSINESS INFORMATION, OR ANY OTHER PECUNIARY LOSS) DIRECT OR INDIRECT, TO YOU OR TO ANY THIRD PARTY, ARISING OUT OF THE USE OR INABILITY TO USE THIS SOFTWARE PRODUCT, EVEN IF FGL HAS BEEN ADVISED OF THE POSSIBILITY OF SUCH DAMAGES.

## **9. ENTIRE AGREEMENT**

This LICENSE AGREEMENT (including any addendum or amendment to this LICENSE AGREEMENT included with the SOFTWARE PRODUCT) is the entire agreement between you and FGL relating to the SOFTWARE PRODUCT and supersedes all prior contemporaneous oral or written communications, proposals and representations with respect to the SOFTWARE PRODUCT or any other subject covered by this LICENSE AGREEMENT.

## **10. INDEMNITY**

You agree to indemnify and hold FGL, and its subsidiaries, affiliates, officers, agents, co-branders or other partners, and employees, harmless from any damage, claim or demand, including without limitation reasonable attorneys' fees, made by any third party due to or arising out of your violation of the terms and conditions of this LICENSE AGREEMENT, or your violation of any rights of another person or entity.

## **11. GOVERNING LAW AND JURISDICTION**

To the maximum extent permitted by applicable law, this LICENSE AGREEMENT is governed by the laws of JAPAN. To the maximum extent permitted by applicable law, you and FGL hereby irrevocably submit to the exclusive jurisdiction of the Tokyo District Court and other higher courts having jurisdiction in Japan for the settlement of disputes arising under or in connection with this LICENSE AGREEMENT.

## **12. LANGUAGE OF AGREEMENT.**

This LICENSE AGREEMENT shall be agreed based on the English language. The text in order language is made for reference purpose only and if there are any discrepancies between the English text and the text in other language, the English text shall prevail.

# Contents

---

<b>1. Usage Precautions</b>	<b>6</b>
1-1 Precautions when using the License Manager	6
<b>2. Overview</b>	<b>7</b>
2-1 Product composition	7
<b>3. License overview</b>	<b>8</b>
3-1 About licenses	8
3-2 License move rule	10
<b>4. Operation</b>	<b>13</b>
4-1 Show license	13
4-2 Move license	15
4-2-1 Moving a license from a WHITE-USB-KEY to another WHITE-USB-KEY	16
4-2-2 Moving a license from a WHITE-USB-KEY to a PC	17
4-2-3 Returning a license moved to a different WHITE-USB-KEY to the WHITE-USB-KEY when purchased	18
4-2-4 Restoring a license moved to a PC to the original WHITE-USB-KEY	21
<b>5. Product Specifications</b>	<b>22</b>
5-1 Operating conditions	22
<b>6. Troubleshooting</b>	<b>23</b>
6-1 Troubleshooting	23
<b>7. Appendix (Installation/Uninstallation)</b>	<b>24</b>
7-1 Materials to be prepared beforehand	24
7-2 Software installation	25
7-2-1 Installation notes	25
7-2-2 Software installation and launch the program	25
7-3 Software uninstallation	29
7-3-1 Uninstallation notes	29
7-3-2 Software uninstall	29

# 1. Usage Precautions

---

## 1-1 Precautions when using the License Manager

1. Please read and agree to the LICENSE AGREEMENT for “License Manager for VRF SYSTEM” at the beginning of this manual before using the License Manager for VRF SYSTEM (Hereinafter called “License Manager”).
2. Please confirm that the PC for the License Manager meets the operating condition of the “Product Specifications” .
3. Please read and fully understand this manual before using the License Manager.
4. The WHITE-USB-KEY will not be reissued. Keep and handle them with great care after installing.
5. The License Manager uses clock time from PC. Set the correct time before use.
6. This product may be updated without prior notice. If by chance you encounter any trouble with this product, check with your service personnel for updates.
7. When the operation of this software is disabled by the Anti-Virus software, exclude the surveillance target setting of Anti-Virus software for this software. Please refer to your Anti-Virus software manual on how to do this.

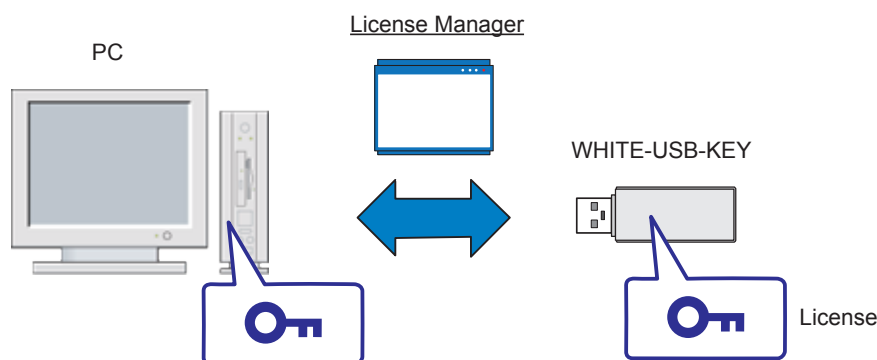
## 2. Overview

### 2-1 Product composition

This section describes the roles of this product and the devices handled by this product.

- License Manager

A license is required when using application software. The license will be stored in the WHITE-USB-KEY that is included with the application software product you purchased. The License Manager is an application that can move the storage location of this license. Use this when a license is moved to a PC or different WHITE-USB-KEY and to return it to its source from its destination. The License Manager is stored in the WHITE-USB-KEY supplied with application software product. Install and use this on a PC.



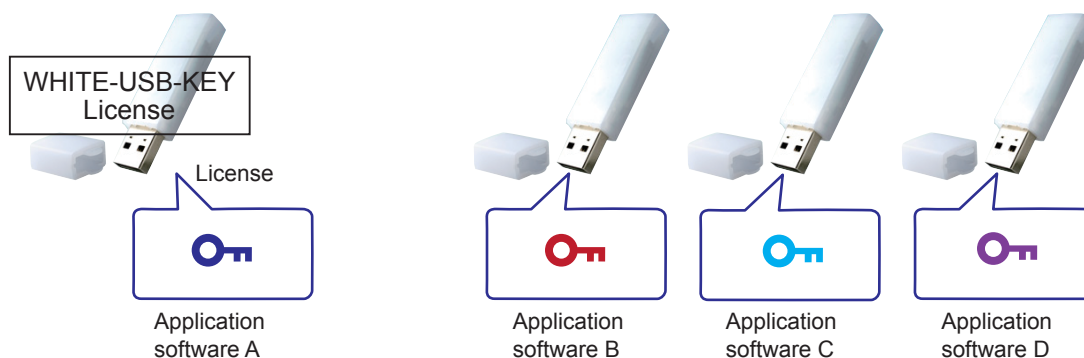
- What is application software?

The software group running on the Windows OS in the VRF air conditioning system products is called application software. This specifically refers to the following.

- System Controller for VRF System and optional products
- System Controller Lite for VRF System and optional products
- BACnet® Gateway for VRF System
- Service Tool for VRF System
- Web Monitoring Tool for VRF System

- What is a WHITE-USB-KEY?

This is the device (dongle) to store the licenses of application software. One applicable application software license is stored in a WHITE-USB-KEY when you purchase it.



Insert this WHITE-USB-KEY on which the license has been stored into a PC to make it possible to use the applicable application software on that PC.

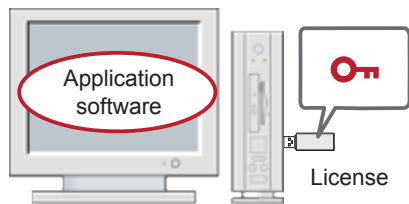
## 3. License overview

### 3-1 About licenses

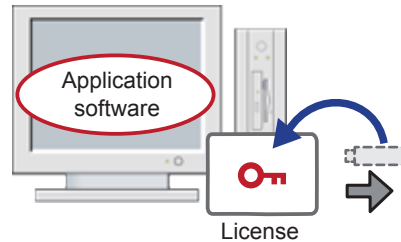
You will need to have an applicable application software license to use the application software product. Operate with either of the following methods depending on whether the license you require is single or multiple.

#### 1. Single license

This is the usage format when using one piece of application software on one PC.



(1) License in WHITE-USB-KEY



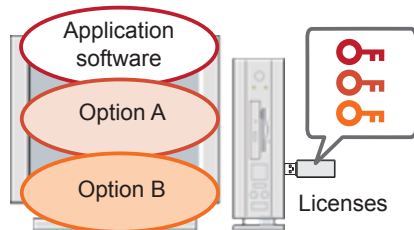
(2) License in PC

#### 2. Multiple Licenses

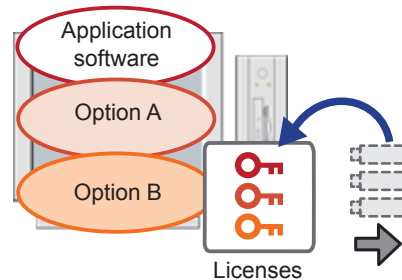
This is the usage format when using software options.

In this case, you will need multiple licenses and you will need to move the licenses to a PC or WHITE-USB-KEY.

\* There may be no optional product depending on the products.



(1) Licenses in WHITE-USB-KEY



(2) Licenses in PC

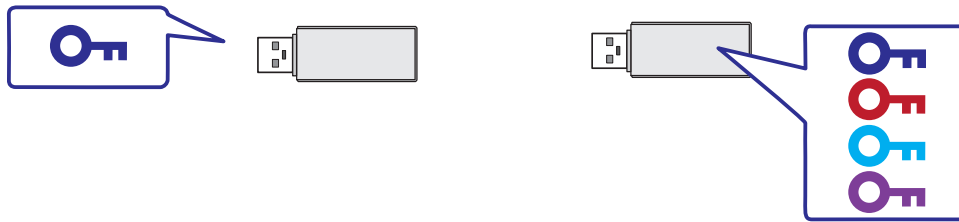
### Note

You cannot insert and use multiple WHITE-USB-KEYs into a PC at the same time. Therefore, operate with one of the methods above to use multiple licenses.



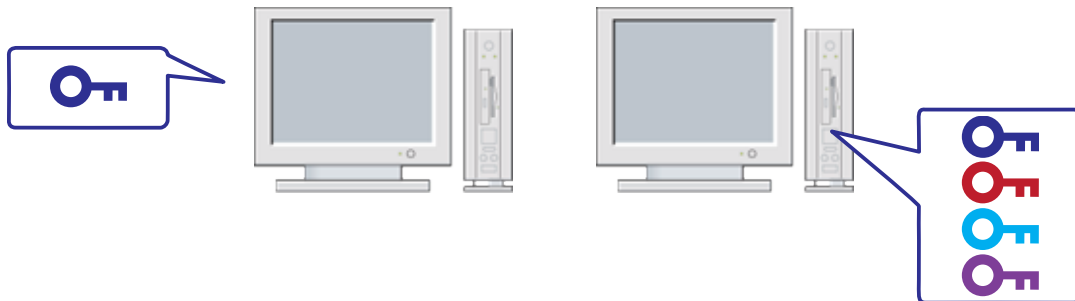
- License storage location  
You can select the license storage location.

#### 1. WHITE-USB-KEY



Select this as the license storage location if you need to carry around the license. The license will be stored on the WHITE-USB-KEY when you purchase the product. You can use the License Manager to combine and walk around with multiple licenses on one WHITE-USB-KEY.

#### 2. PC



Select this as the license storage location if the PC on which you will use the application software has been determined. You will no longer need to insert the WHITE-USB-KEY all the time by moving the license to the PC. This helps to prevent breakage and theft of the WHITE-USB-KEY. You can also use the License Manager to combine multiple licenses onto one PC.

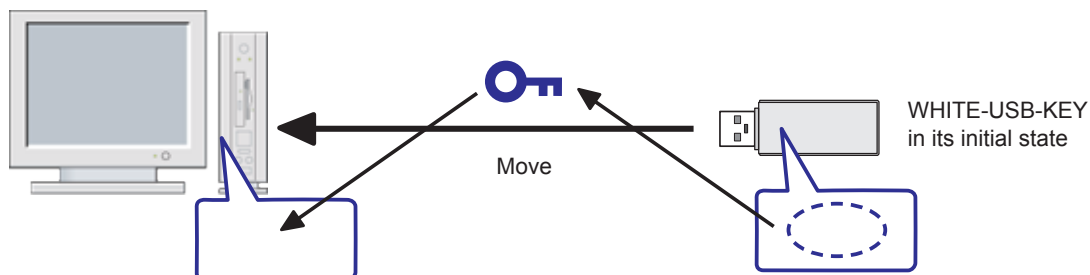
## 3-2 License move rule

This section describes the move rule when a license is moved.

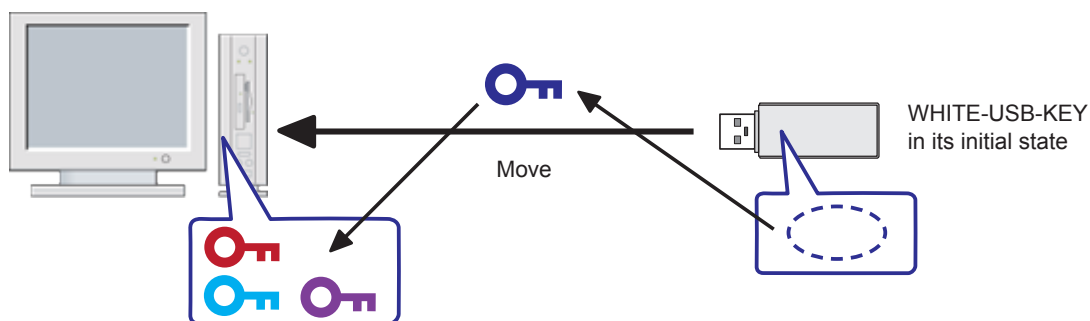
- What is possible:

1. You can move a license on a WHITE-USB-KEY in its initial state\* to a PC.

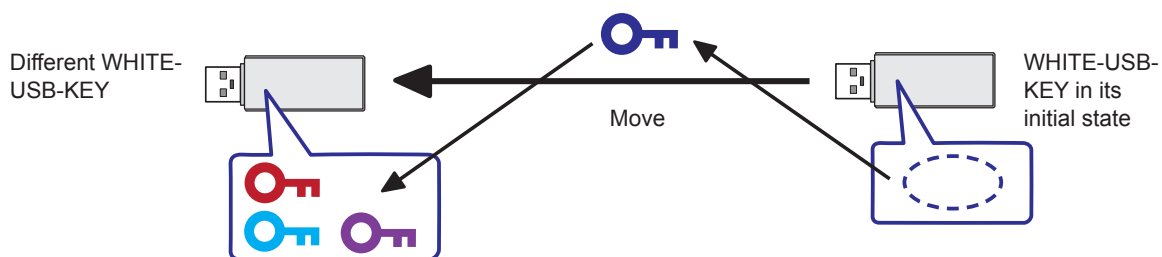
\* The “initial state” refers to a combination of the WHITE-USB-KEY when you purchased the product and the license stored on it.



2. You can move multiple licenses on a WHITE-USB-KEY in its initial state to a PC.



3. You can move a license on a WHITE-USB-KEY in its initial state to a different WHITE-USB-KEY.

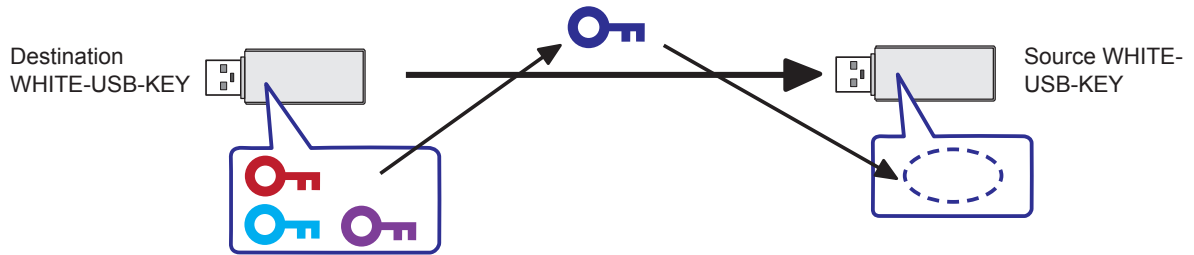


However, you cannot move licenses if the conditions of 1 or 2 are met in the later “What you cannot do” section.

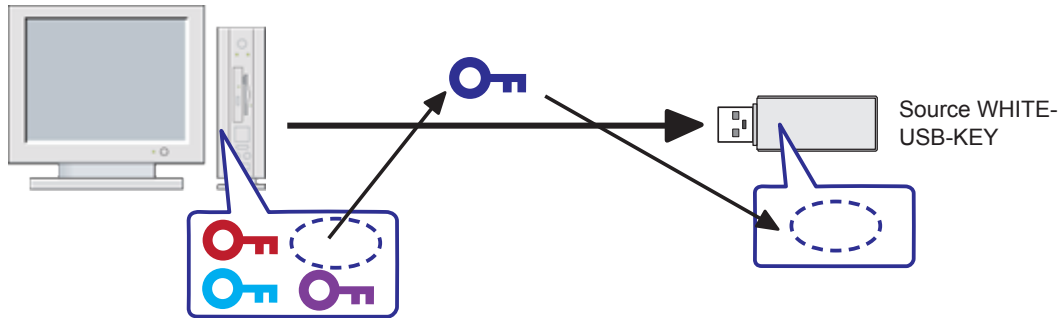
### Note

The number of times each license can be moved from USB to PC is up to 2 times.

4. You can return a license you moved to a different WHITE-USB-KEY to its source WHITE-USB-KEY.



5. You can return a license you moved to a PC to its source WHITE-USB-KEY.

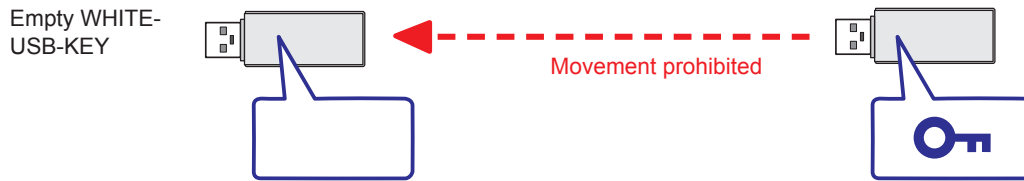


## Note

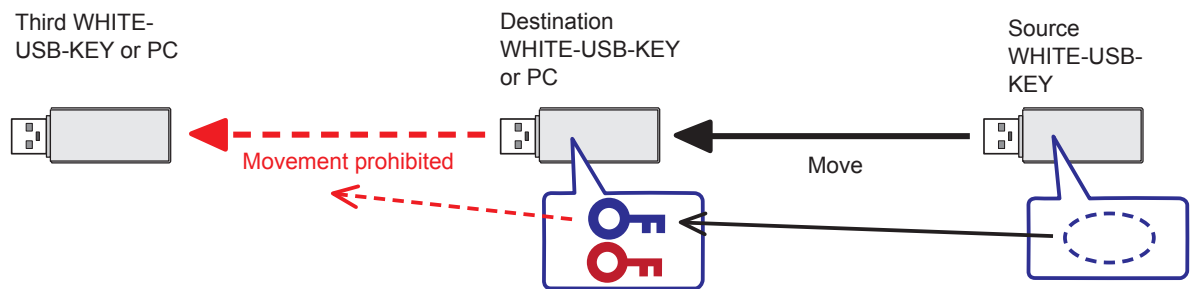
A WHITE-USB-KEY has a 16-digit hardware ID not duplicated on other WHITE-USB-KEYs. In addition, the WHITE-USB-KEY hardware ID is stored in the license. If a license is returned to a WHITE-USB-KEY from its destination, you can only return the license to the WHITE-USB-KEY onto which it was stored when you purchased the product. You can check the WHITE-USB-KEY hardware ID with the show li-  
cense function of the License Manager.

- What you cannot do

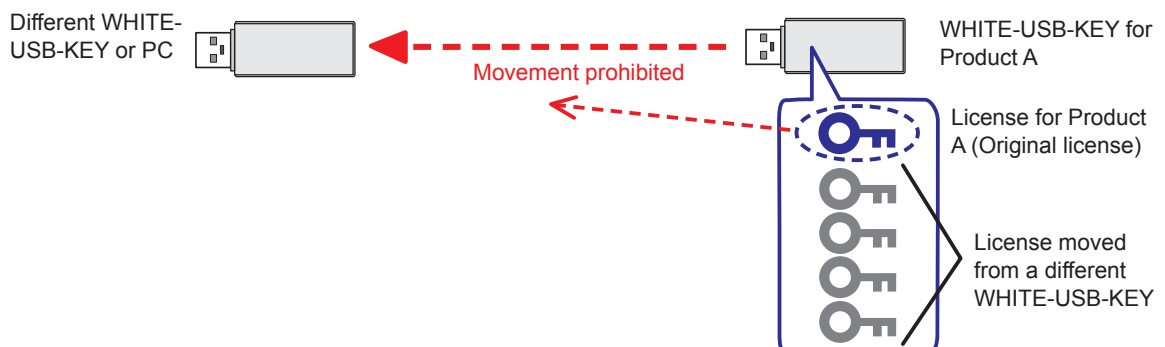
1. You cannot move a license in a different WHITE-USB-KEY to an empty WHITE-USB-KEY with no license. However, you can return a license key that has been moved back to its source.



2. You cannot move a license that has been moved to a different device. You need to use the license that has been moved in that device or return it to its source WHITE-USB-KEY.



3. You cannot move an original license key in a WHITE-USB-KEY to a different device from a state in which multiple licenses have been moved. If an original license in a WHITE-USB-KEY is moved to a different device, you need to do so after first returning all the licenses that have been moved to that WHITE-USB-KEY to their source WHITE-USB-KEYs.



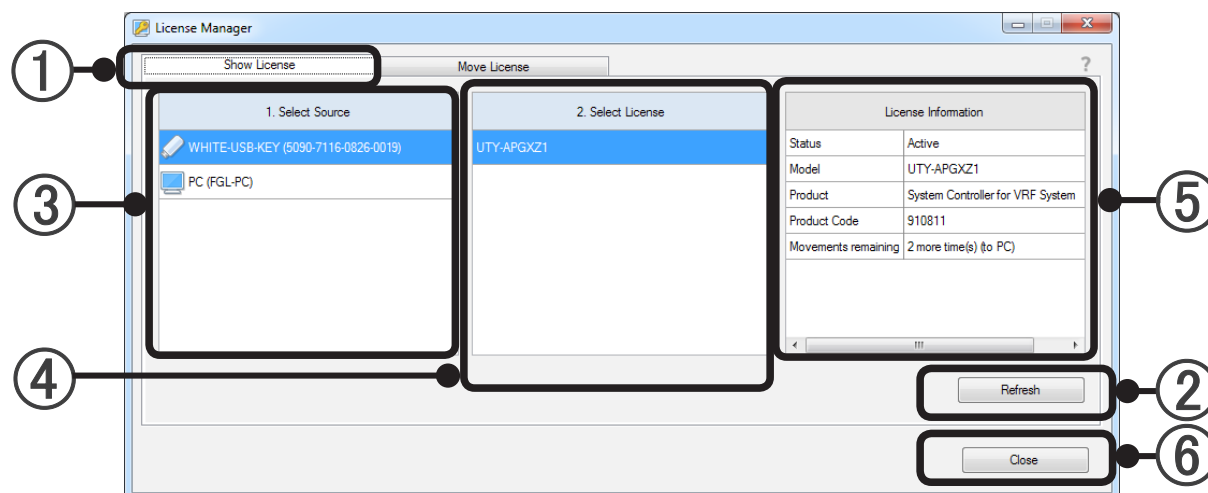
## Note

You can move up to 64 licenses to one device.

## 4. Operation

### 4-1 Show license

You can browse license information stored on a WHITE-USB-KEY or a PC with the show license function.



- ① **Show License**  
Startup License Manager and select the “Show License” tab to use the show license function.
- ② **“Refresh” Button**  
Insert the WHITE-USB-KEY into the PC and press the “Refresh” button. The License Manager window will be updated and the latest information will be shown. The Windows auto run pop-up window will be shown when you insert the WHITE-USB-KEY into the PC. Cancel and close this window. You do not need to insert the WHITE-USB-KEY if you just wish to check the license information on the PC.
- ③ **Select Source**  
Select the license information reference source device from the WHITE-USB-KEY or PC. The hardware information will be shown in the ( ) after the name for each device.  
The 16-digit hardware ID will be shown for WHITE-USB-KEYs. The PC name will be shown for PCs.
- ④ **Select License**  
The licenses related to the device selected in ③ will be shown in a list. The active licenses stored on the current device will be shown in the list. In addition, original licenses originally stored on the applicable device will be shown in the list even if they have been moved. If multiple licenses are found, all the stored licenses will be shown in the list. If it is not possible to find a license in the device selected in ③, a blank space will be shown.

## ⑤ License Information

This shows the information relating to the license selected in ④.

[Status]: The status of the selected license will be shown.

“Active”: The selected license is in the device selected in ③ and active.

“No License”: The selected license is not in the WHITE-USB-KEY selected in ③. The license has been moved to a PC or a different WHITE-USB-KEY.

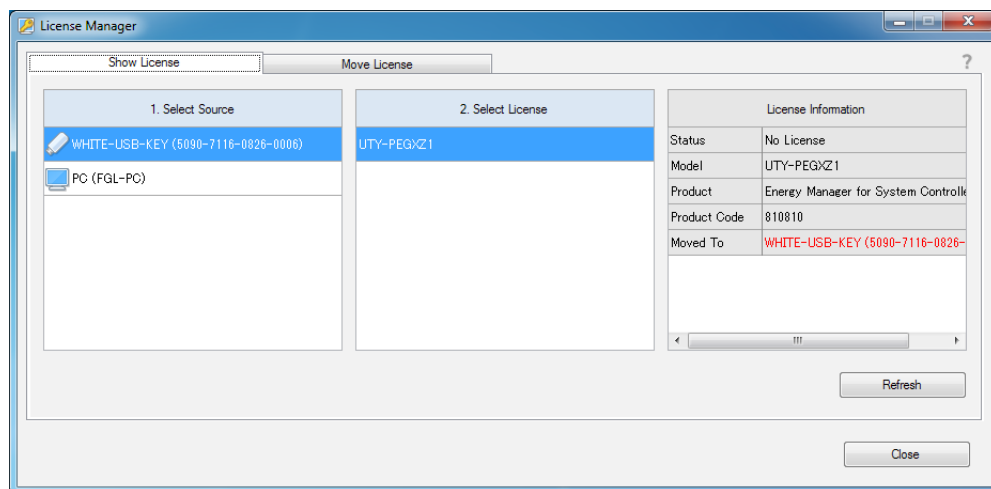
[Model]: The model name of the licensed product will be shown.

[Product]: The product name of the licensed product will be shown.

[Product Code]: The product code of the licensed product will be shown.

[Movements Remaining]: Displays the number of remaining movements of License to the PC.

[Move to]: The destination device information will be shown only when the [Status] is “No License.”



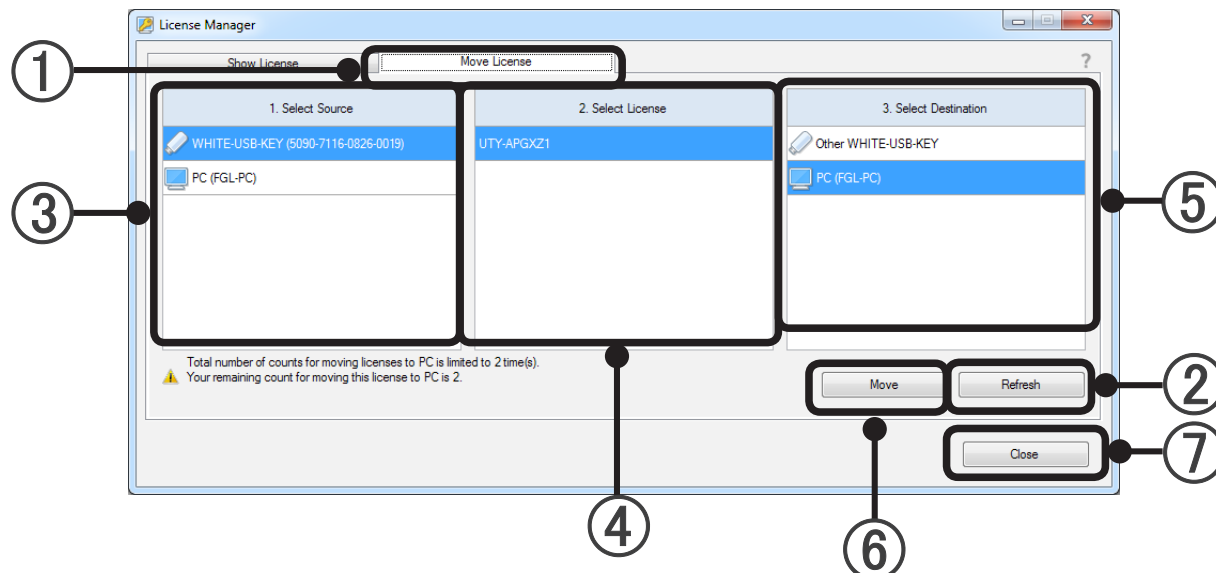
## ⑥ “Close” Button

End the License Manager application by pressing this button.

## 4-2 Move license

You can move a license with the move license function.

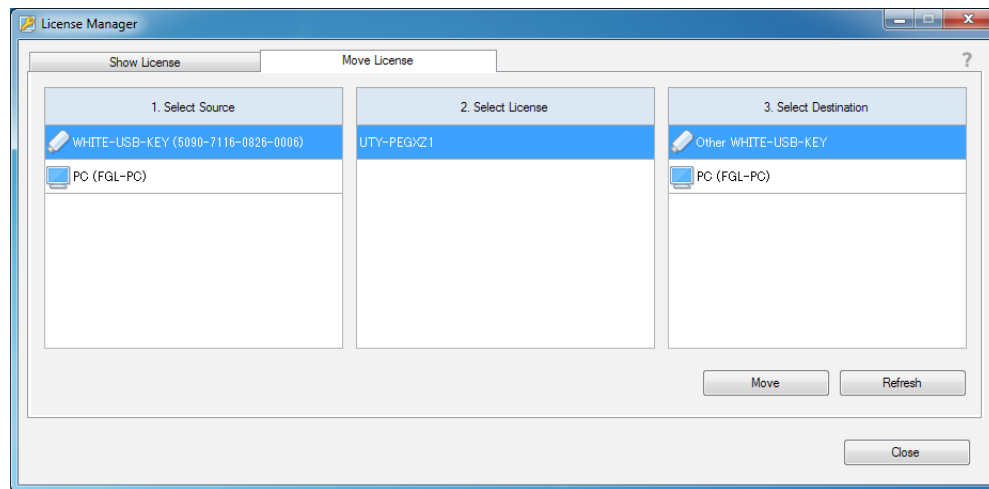
Use this function when a license key stored on a WHITE-USB-KEY is moved to a different WHITE-USB-KEY or PC and when a license key is returned to its source WHITE-USB-KEY. You can also combine multiple licenses in one location.



- ① **Move License**  
Startup License Manager and select the “Move License” tab to use the move license function.
- ② **“Refresh” Button**  
Insert the WHITE-USB-KEY into the PC and press the “Refresh” button. The License Manager window will be updated and the latest information will be shown. The Windows auto run pop-up window will be shown when you insert the WHITE-USB-KEY into the PC. However, cancel and close this window.
- ③ **Select Source**  
Select the license source device from the WHITE-USB-KEY or PC. The hardware information will be shown in the ( ) after the name for each device. The 16-digit hardware ID will be shown for WHITE-USB-KEYs. The PC name will be shown for PCs.
- ④ **Select License**  
The current active licenses stored in the device selected in ③ will be shown in a list. Select one license to move from the list. If multiple active licenses are found, all the licenses will be shown in the list. Only one license can be moved at one operation. If it is not possible to find a license in the device selected in ③, a blank space will be shown.
- ⑤ **Select Destination**  
Select the license destination device from a WHITE-USB-KEY or PC. The hardware information will be shown in the ( ) after the name for each device. The meaning of the hardware information is the same as in ③.
- ⑥ **“Move” Button**  
The license will start to move when you press the “Move” button.
- ⑦ **“Close” Button**  
End the License Manager application by pressing this button.

## 4-2-1 Moving a license from a WHITE-USB-KEY to another WHITE-USB-KEY

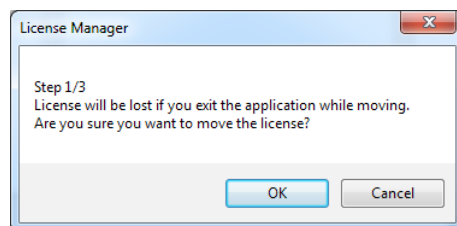
Specify the license source (1. Select Source), the license you will move (2. Select License) and the destination (3. Select Destination).



**Press the “Move” button.**

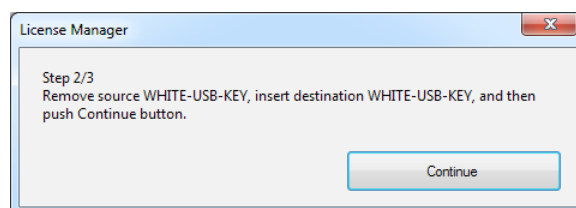
- Step 1/3

The following window will be shown. Press the “OK” button to start moving the license.



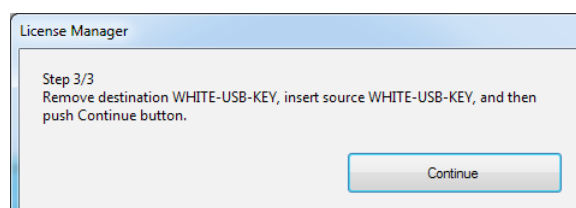
- Step 2/3

Remove the source WHITE-USB-KEY from the USB port. Insert the destination WHITE-USB-KEY into the USB port. Press the “Continue” button.



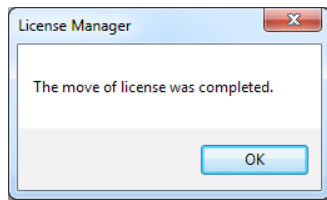
- Step 3/3

Remove the destination WHITE-USB-KEY from the USB port. Insert the source WHITE-USB-KEY into the USB port again. Press the “Continue” button.





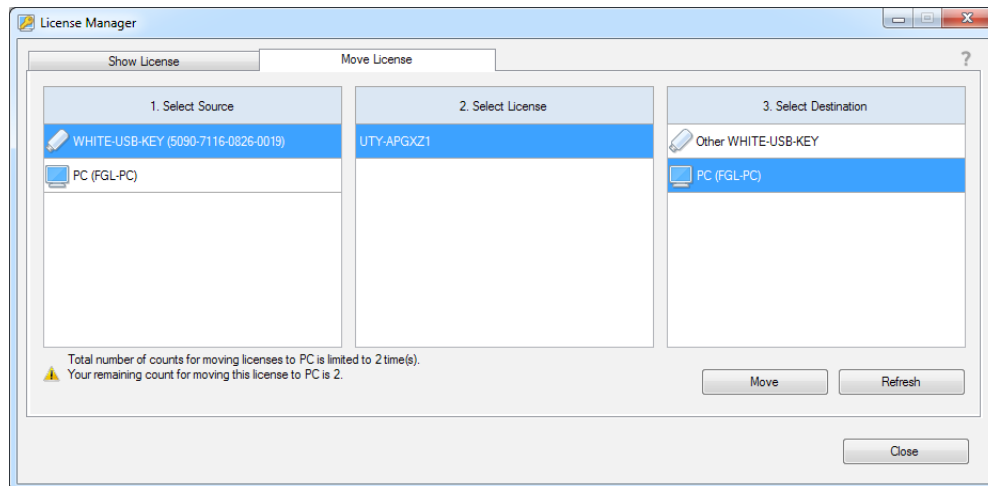
The movement of the license will be completed once the following window is shown. Press the “OK” button to end the operation.



Repeat these steps if multiple licenses are moved.

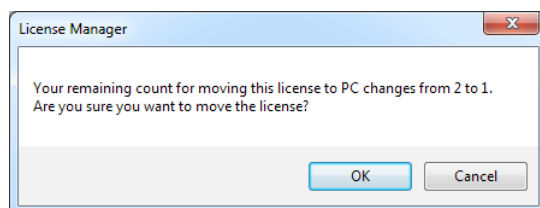
## 4-2-2 Moving a license from a WHITE-USB-KEY to a PC

Specify the license source (1. Select Source), the license you will move (2. Select License) and the destination (3. Select Destination).

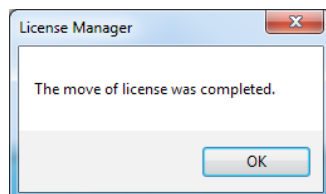


**Press the “Move” button.**

The following window will be shown. Press the “OK” button to start moving the license.



The movement of the license will be completed once the following window is shown. Press the “OK” button to end the operation.



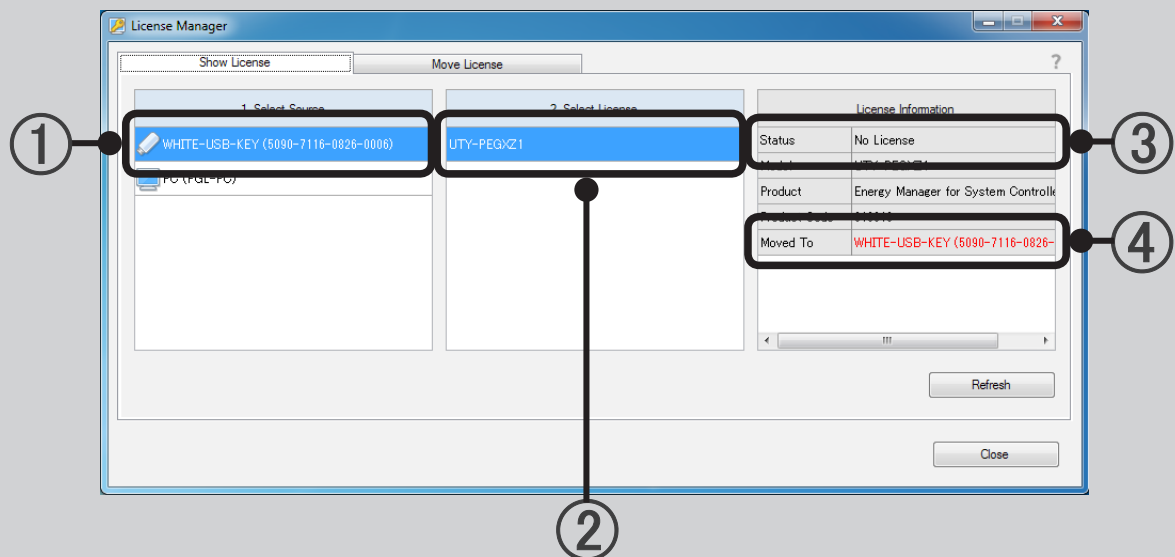
Repeat these steps if multiple licenses are moved.

## 4-2-3 Returning a license moved to a different WHITE-USB-KEY to the WHITE-USB-KEY when purchased

- Preparation

Get ready the WHITE-USB-KEY (a) on which the license was stored when you purchased it and the WHITE-USB-KEY (b) on which the license is currently stored.

Insert WHITE-USB-KEY (a) into the PC. Show the license information according to the steps in “4-1 Show license.” Press the “Refresh” button if this information is not shown.

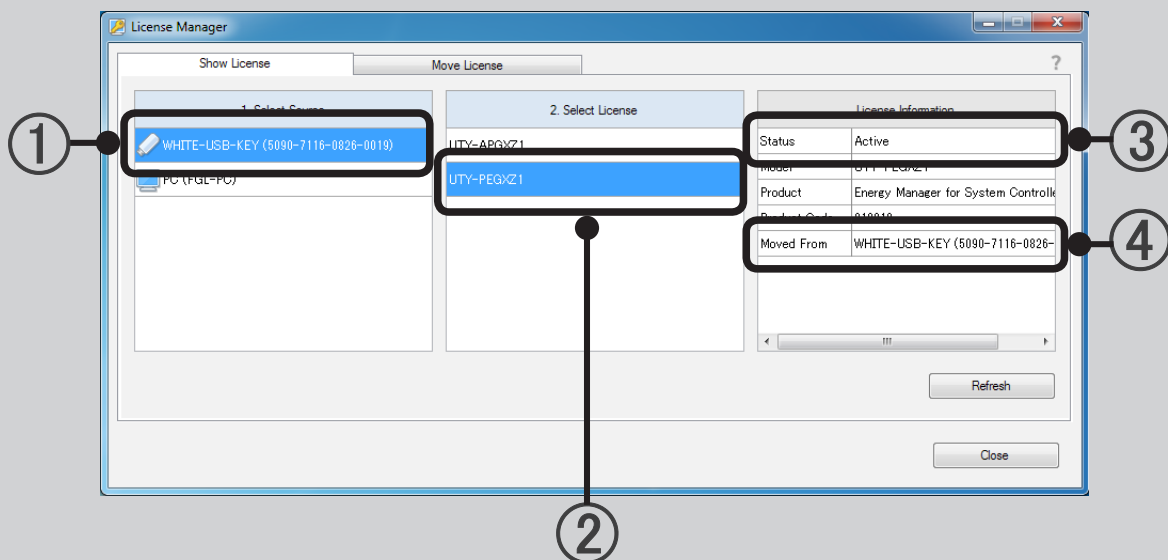


- Check

Check the content of the license information.

The hardware ID of the WHITE-USB-KEY (a) currently inserted will be shown in ①. Check that ② is the license that you will now return to its source. The current license status will be shown in ③. Check that there is no license on the currently inserted WHITE-USB-KEY. The hardware ID of the WHITE-USB-KEY that stores the license currently will be shown in ④. This WHITE-USB-KEY corresponds to (b).

Next, remove the WHITE-USB-KEY (a). Insert the WHITE-USB-KEY (b) into the PC. Show the license information according to the steps in “4-1 Show license.” Press the “Refresh” button to update the information shown.



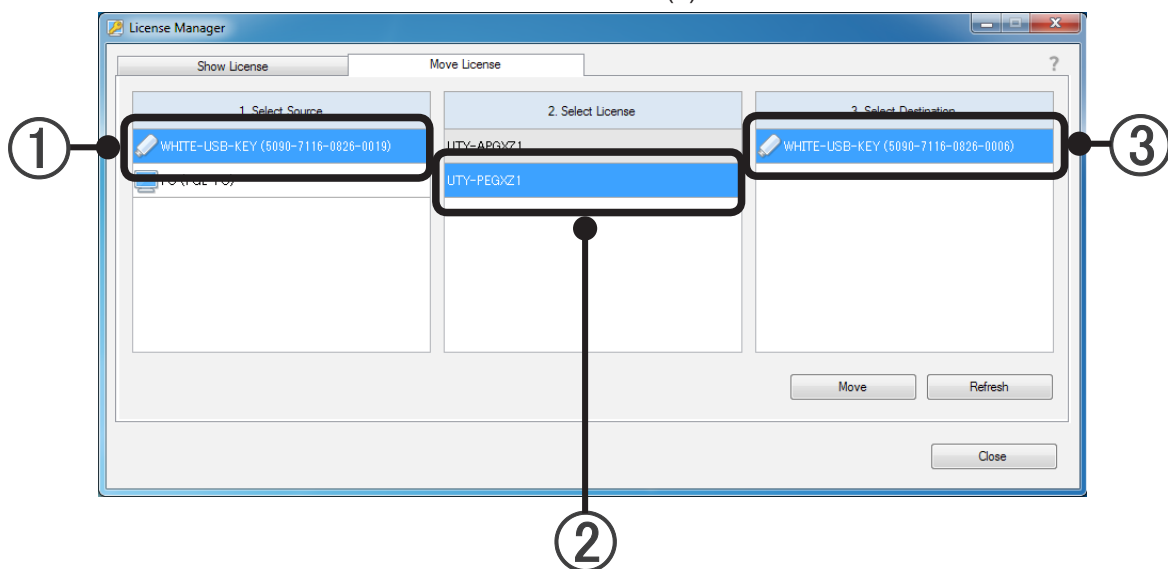
- Check

Check the content of the license information.

The hardware ID of the WHITE-USB-KEY currently inserted will be shown in ①. Check that this matches with the hardware ID (b) that you checked earlier. Check that ② is the license that you will now return to its source. The current license status will be shown in ③. Check that the license is on the currently inserted WHITE-USB-KEY. The hardware ID of the WHITE-USB-KEY that is the destination of the license will be shown in ④. Check that this matches with the hardware ID (a) that you checked earlier.

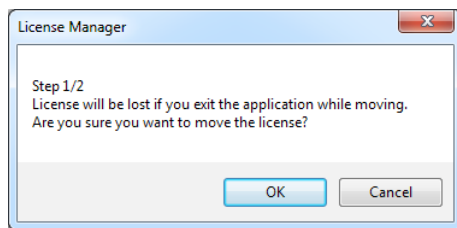
- Move the license

Select the “Move License” tab while the WHITE-USB-KEY (b) is still inserted.

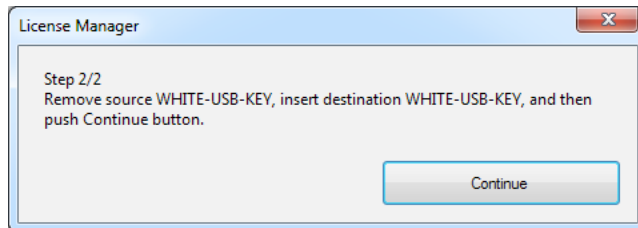


Select the WHITE-USB-KEY (b) onto which the license is currently stored with ①. Select the license you will return to its source with ②. Specify the WHITE-USB-KEY (a) onto which the license was stored when you purchased it that is the destination with ③. Check that the hardware ID matches with that of (a) that you checked earlier.

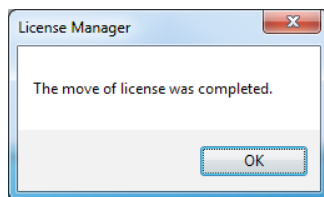
Press the “Move” button to start the movement. The following window will be shown. Press the “OK” button to start moving the license.



The following window will be shown. Remove the source WHITE-USB-KEY (b), insert the destination WHITE-USB-KEY (a) and press the “Continue” button.



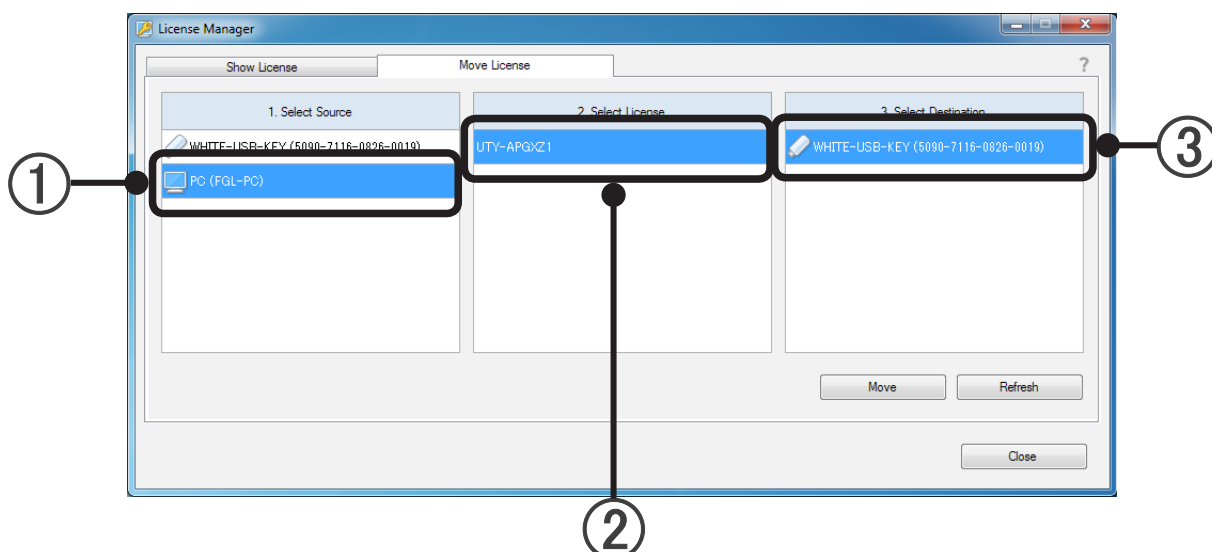
The movement of the license will be completed once the following window is shown. Press the “OK” button to end the operation.



Repeat these steps if multiple licenses are moved.

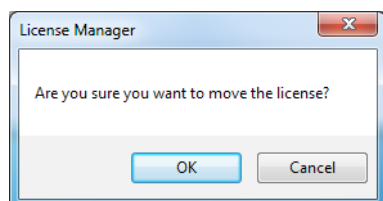
## 4-2-4 Restoring a license moved to a PC to the original WHITE-USB-KEY

The steps for this are the same as those in 4-2-2. Perform this task by substituting the WHITE-USB-KEY (b) with the PC. The PC name will be shown instead of the hardware ID for PCs.

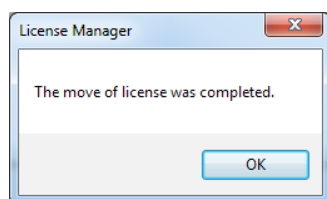


Select the PC onto which the license is currently stored with ①. Select the license you will return to its source with ②. Specify the WHITE-USB-KEY onto which the license was stored when you purchased it that is the destination with ③. Press the “Move” button to start the movement.

The following window will be shown. Press the “OK” button to start moving the license.



The movement of the license will be completed once the following window is shown. Press the “OK” button to end the operation.



Repeat these steps if multiple licenses are moved.

## 5. Product Specifications

### 5-1 Operating conditions

#### PERSONAL COMPUTER SPECIFICATIONS

Software	License Manager for VRF System
Operating system	<ul style="list-style-type: none"><li>• Microsoft® Windows® 7 Home Premium (32-bit or 64-bit) SP1, Windows® 7 Professional (32-bit or 64-bit) SP1</li><li>• Microsoft® Windows® 8.1 (32-bit or 64-bit), Windows® 8.1 Pro (32-bit or 64-bit)</li><li>• Microsoft® Windows® 10 Home (32-bit or 64-bit), Windows® 10 Pro (32-bit or 64-bit)</li></ul> [Supported languages] English, Chinese, French, German, Russian, Spanish and Polish
CPU	Intel® Core™ i3 1 GHz or higher
Memory	<ul style="list-style-type: none"><li>• 1 GB or more (for Windows® 7 [32-bit])</li><li>• 2 GB or more (for Windows® 7 [64-bit], Windows® 8.1, and Windows® 10)</li></ul>
HDD	200 MB or more of free space
Display	1024 × 768 or higher resolution
Interface	USB 1 port

## 6. Troubleshooting

### 6-1 Troubleshooting

Trouble contents	
Cause	Countermeasure
The destination of the license is gray and cannot be selected.	
The license of the same product already exists on the PC.	The license already exists on the PC, so there is no need to move it.
It is not possible to move a license to a different WHITE-USB-KEY	
The original license stored at purchase does not exist on the destination WHITE-USB-KEY.	Refer to the license move rule and specify a WHITE-USB-KEY where the original license (at product purchase) is stored at the destination of the license.
It is not possible to return a license moved to a PC to its WHITE-USB-KEY	
You are attempting to return the license to a different WHITE-USB-KEY.	Get ready the WHITE-USB-KEY onto which that license was originally stored. You can use the "Show License" tab to check the individual information of the WHITE-USB-KEY.
There is an authentication error when the application software starts up	
The application software license has not been moved properly.	Insert the WHITE-USB-KEY that stores the license into the PC or move the license to the PC, and then start the application software.
Multiple WHITE-USB-KEYs are inserted into a PC.	The application software cannot recognize multiple WHITE-USB-KEYs at the same time. If you have multiple licenses, use them after combining them onto a PC or combining them onto one WHITE-USB-KEY.

## 7. Appendix (Installation/Uninstallation)

---

This section describes Installation/Uninstallation of the License Manager.

Refer to the followings when you install or uninstall the License Manager to PC arbitrarily.

When you install the application software from WHITEUSB-KEY, the VRF License Manager will normally be installed at the same time.

### 7-1 Materials to be prepared beforehand

Materials necessary at installation of the software

- License Manager Installer

Materials necessary at installation of License

- The license in the WHITE-USB-KEY (Packed together with the application software product)



## 7-2 Software installation

### 7-2-1 Installation notes

---

Before starting the installation of this product, check each of the followings.

- Install Adobe Reader (Ver. 9.0 or later) prior to the installation. (Adobe Reader does not come with this product).
- Remove all program as described in “7-3 Uninstall and version upgrade” , if you have the same or previous version of License Manager.
- You are required to login to the computer as Administrator (or equivalent) to the PC to install this product.
- Stop all running programs before you start the installation.
- If Anti-Virus software product is installed, temporarily disable the software during the installation of this product.
- Insert the WHITE-USB-KEY and check that it is properly recognized.

#### Note

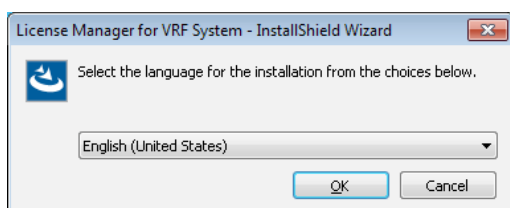
The Windows auto run pop-up window will be shown when you insert the WHITE-USB-KEY into the PC. Cancel and close this window.

### 7-2-2 Software installation and launch the program

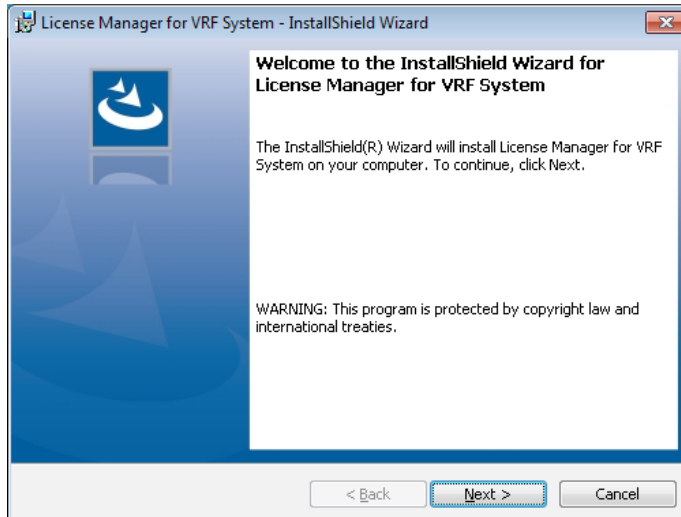
---

To install the VRF License Manager by itself, please follow the procedure below.

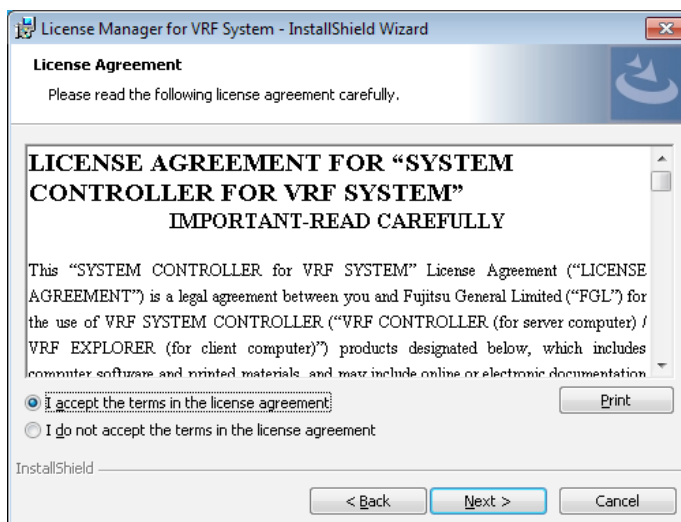
- ① Insert the WHITE-USB-KEY into the PC
- ② Run the following file that is on the WHITE-USB-KEY. The installer of the License Manager will startup.  
\\Tools\\License\\setup.exe
- ③ The language selection window will be shown. Select the language and press “OK.”



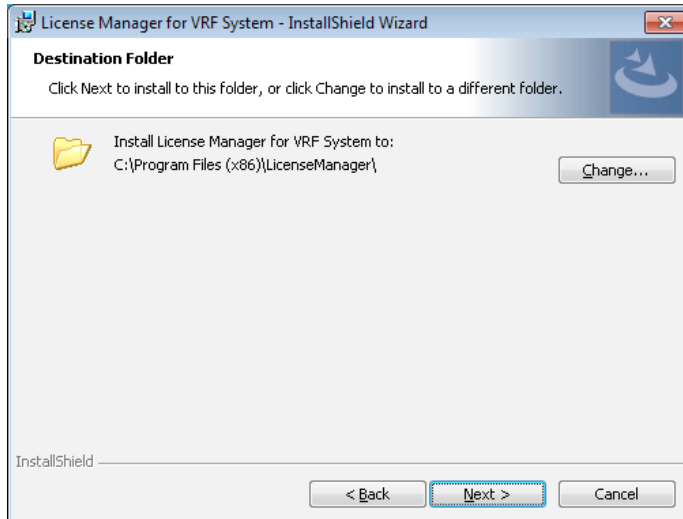
- ④ The install wizard will startup, so press “Next.”



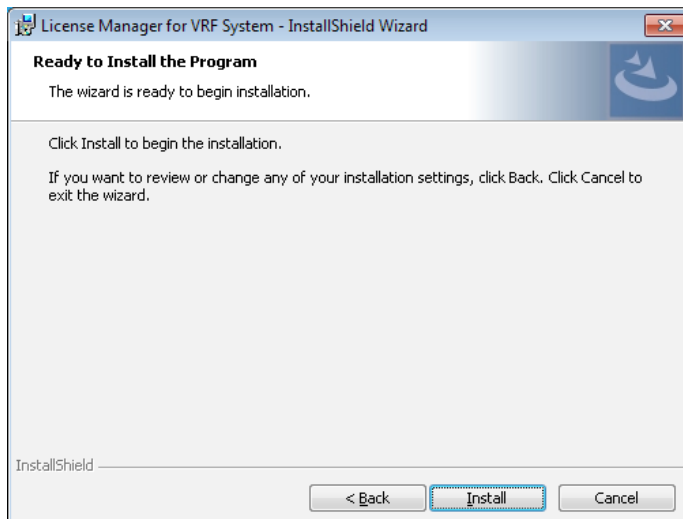
- ⑤ If the License Manager end user "licensing Agreement" is displayed, confirm the contents. If you can agree to the terms of the licensing agreement, check “I accept the terms in the license agreement” and click the “Next” button.



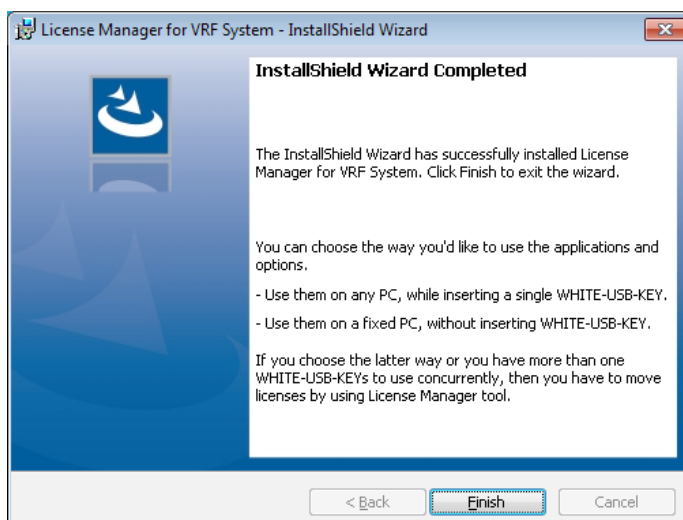
- ⑥ Select the installation location and press “Next.”



- ⑦ The installation will start when you press “Install.”



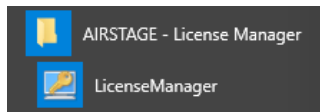
- ⑧ The following window will appear once the installation has been completed. Press “Finish” to close the window.



- Startup the program

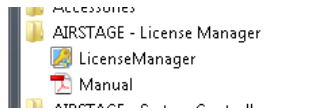
In the case of Windows 10:

"Start" → "AIRSTAGE - License Manager" → "License Manager"



In cases other than Windows 10

"Start" → "All Programs" → "AIRSTAGE - License Manager" → "License Manager"



## 7-3 Software uninstallation

### 7-3-1 Uninstallation notes

---

When the License Manager is uninstalled, the License cannot be moved.

If necessary, return all licenses moved to the PC to their source WHITE-USB-KEYs before uninstalling License Manager from the PC. Refer to “4-2 Move License” for the specific method to return licenses.

### 7-3-2 Software uninstall

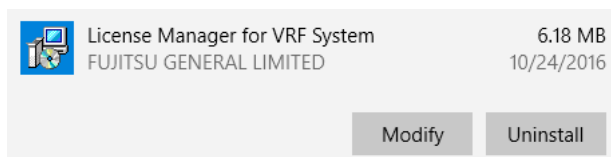
---

- ① In the case of Windows 10:  
Select “License Manager for VRF System” from the Apps & features list.  
("Start" → "Settings" → "System" → "Apps & features")

In cases other than Windows 10:

Select “License Manager for VRF System” from the programs and features list in the control panel.

- ② Select uninstall



(Windows 10)

- ③ The software has successfully uninstalled if License Manager for VRF System has been deleted from the app and function list in the control panel.